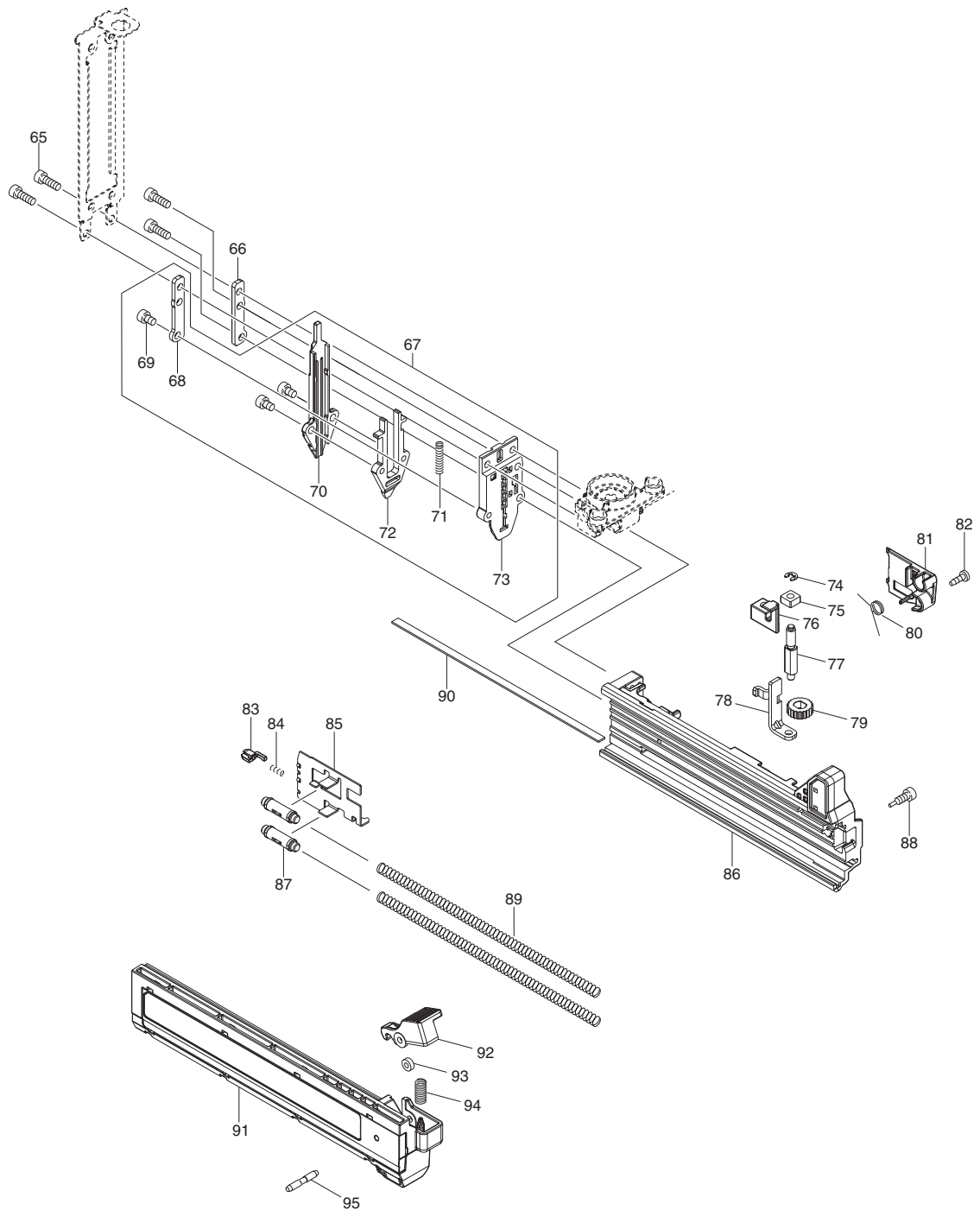


DFN350 1/2



PARTS LIST

Item No	Type	Part No	Description	Qty	Unit
001		183L67-6	HOUSING SET	1	SE
001	INC.	252126-6	HEX. LOCKING NUT M4-7	2	PC.
001	INC.	263005-3	RUBBER PIN 6	2	PC.
001	INC.	931102-0	HEX. NUT M4	1	PC.
002		855T69-7	DFN350 NAME PLATE	1	PC.
003		911173-3	PAN HEAD SCREW M4X45	1	PC.
004		266130-9	TAPPING SCREW BIND PT 3X16	1	PC.
005		457385-9	HOUSING R COVER	1	PC.
006		266130-9	TAPPING SCREW BIND PT 3X16	7	PC.
007		911118-1	PAN HEAD SCREW M4X12	2	PC.
008		620507-6	LED CIRCUIT	1	PC.
009		632N39-5	CONTROLLER UNIT	1	PC.
010		643860-3	TERMINAL	1	PC.
011		855T76-0	DFN350 SERIAL NO. LABEL	1	PC.
012		632G60-2	SWITCH UNIT - w/ Lead Wire (Short)	1	PC.
013		456799-9	TRIGGER LOCK	1	PC.
014		651910-0	SWITCH D2VW-01-3HS	1	PC.
015		232370-1	COMPRESSION SPRING 5	1	PC.
016	2	412772-9	TRIGGER	1	PC.
017		632K06-2	SWITCH UNIT - w/ Lead Wire (Long)	1	PC.
019		915101-0	BINDING HEAD SCREW M4X6	4	PC.
020		459369-3	FRONT COVER	1	PC.
021		347528-0	UPPER PLATE	1	PC.
022		256882-0	FLAT FILLISTER HD. PIN 4	1	PC.
023		347519-1	DRIVER	1	PC.
024		347521-4	RAIL	1	PC.
025	2	313421-0	COUNTER WEIGHT A	2	PC.
026		310925-3	COUNTER WEIGHT B	2	PC.
027		251566-5	H.S.H BOLT M4X6 WITH W	2	PC.
028		347146-4	PINION GUIDE	2	PC.
029	2	413330-4	COUNTER WEIGHT HOLDER, BLUE	4	PC.
030		136104-3	SPUR GEAR ASSEMBLY	2	PC.
032		326902-5	PINION SHAFT	2	PC.
033		266199-3	HEX.SOCKET HEAD BOLT M4X6	4	PC.
034		347145-6	GUIDE RAIL R	1	PC.
035		347144-8	GUIDE RAIL L	1	PC.
036		326903-3	GUIDE BOLT	1	PC.
037	2	347728-2	BOTTOM PLATE	1	PC.

Item No	Type	Part No	Description	Qty	Unit
038		459311-4	SPRING HOLDER	1	PC.
039		347522-2	SPRING BASE	1	PC.
040		232511-9	COMPRESSION SPRING 17	1	PC.
041	3	347735-5	HAMMER	1	PC.
042		422457-9	CUSHION	1	PC.
043		253804-1	FLAT WASHER 6	1	PC.
045	2	319965-8	HOLDER	1	PC.
046		252273-3	HEX. NUT M6	1	PC.
047	2	347729-0	COUNTER STOPPER	1	PC.
048	2	422592-3	COUNTER CUSHION	2	PC.
049	2	327591-9	WEIGHT	2	PC.
050		232363-8	COMPRESSION SPRING 7	2	PC.
051	2	327592-7	GUIDE PIPE	2	PC.
052		347525-6	GEAR PLATE	1	PC.
053		266901-4	TAPPING SCREW 4X14	1	PC.
054	2	140Y96-0	SPUR GEAR 61 COMPLETE	1	PC.
055		347139-1	LOCK ARM	1	PC.
056		327327-6	LOCK PIN	1	PC.
057		253353-8	THIN WASHER 10	1	PC.
058		140K48-7	SPUR GEAR 8 COMPLETE	1	PC.
059		310945-7	LOCK BLOCK	1	PC.
060		232513-5	COMPRESSION SPRING 3	1	PC.
061		221961-3	SPUR GEAR 27	3	PC.
062		227166-3	INTERNAL GEAR 69	1	PC.
063		267053-4	FLAT WASHER 12	1	PC.
064		629408-5	DC MOTOR	1	PC.
065	2	922127-5	* HEX. SOCKET HEAD BOLT M4X16	2	PC.
066		347523-0	PLATE	1	PC.
067		127291-9	DRIVER GUIDE ASSEMBLY	1	PC.
067	INC.		Item No. 68-73		
068		347523-0	PLATE	1	PC.
069		922102-1	HEX. SOCKET HEAD BOLT M4X6	3	PC.
070		310942-3	DRIVER GUIDE	1	PC.
071		232512-7	COMPRESSION SPRING 3	1	PC.
072		310943-1	CENTER PLATE	1	PC.
073		310941-5	SET PLATE	1	PC.
074		961017-7	STOP RING E-3	1	PC.
075		264050-1	SQUARE NUT M5-8	1	PC.
076	2	412237-1	* CONTACT ARM	1	PC.

Item No	Type	Part No	Description	Qty	Unit
076	3	412726-6	* CONTACT ARM	1	PC.
077		327326-8	ADJUSTER SHAFT	1	PC.
078		347529-8	ARM	1	PC.
079		459310-6	ADJUSTER	1	PC.
080		232514-3	TORSION SPRING 7	1	PC.
081		459312-2	ADJUSTER COVER	1	PC.
082		266007-8	TAPPING SCREW BIND PT 3X10	1	PC.
083		310176-8	STOPPER	1	PC.
084		233018-8	COMPRESSION SPRING 3	1	PC.
085		347520-6	PUSHER	1	PC.
086		459305-9	MAGAZINE	1	PC.
087		459313-0	SLEEVE	2	PC.
088		265A52-6	HEX.SOCKET HEAD BOLT M4X14	1	PC.
089		234325-2	COMPRESSION SPRING 6	2	PC.
090		346774-2	NAIL PLATE	1	PC.
091		140K96-6	SLIDE DOOR COMPLETE	1	PC.
091	INC.	819J51-0	CAUTION LABEL	1	PC.
092		457388-3	LEVER	1	PC.
093		262054-7	URETHANE RING 3	1	PC.
094		233117-6	COMPRESSION SPRING 6	1	PC.
095		256877-3	PIN 3	1	PC.
096	2	267010-2	FLAT WASHER 5	1	PC.
097		922117-8	* HEX. SOCKET HEAD BOLT M4X12	2	PC.
A02		251314-2	+ SCREW M4X12 F/HOOK	1	PC.
A03		346449-3	HOOK	1	PC.
A04		422464-2	NOSE ADAPTER	1	PC.
A05		783201-2	HEX. WRENCH 3	1	PC.

SERVICE CHANGES

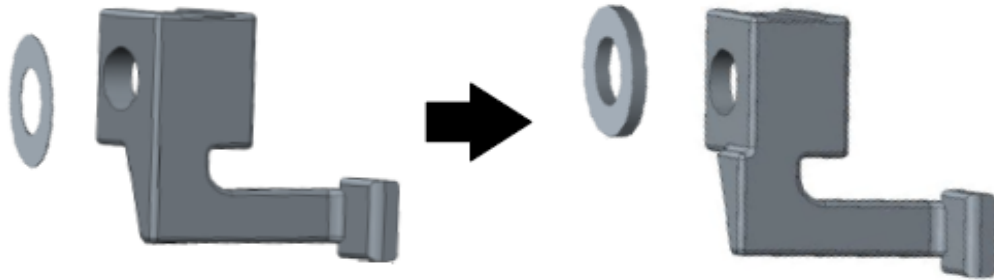
1. Changes on CONTACT ARM AND THIN WASHER (C9157) (D4649)

Item No.	Description	Type 1	Type 2	Type 3
076	CONTACT ARM	459309-1	412237-1	412726-6
096	FLAT WASHER 5	-----	253334-2	267010-2

Above parts are completely interchangeable as a set.

Detailed information

Thin washer 5 Contact arm Flat washer 5 Contact arm



2. Changes on Counter Cushion, Weight, Guide pipe, Hammer, Bottom plate and Counter Stopper

(C9437) (D4555)

Item No.	Description	Type 1	Type 2	Type 3
048	COUNTER CUSHION	-----	422456-1	422592-3
049	WEIGHT	-----	326904-1	327591-9
051	GUIDE PIPE	-----	327328-4	327592-7
041	HAMMER	347524-8	347657-9	347735-5
037	BOTTOM PLATE	-----	347526-4	347728-2